

# Family Matters At Mount Marty

## ‘O’Conner Girls’ Set For Family Weekend

BY REILLY BIEL  
reilly.biel@yankton.net

For the opening of Mount Marty College's (MMC) theatre season, the school is presenting a play that can potentially bring a tear to the eye.

"The O'Conner Girls" will be shown during MMC's Family Weekend Oct. 22-25 in Marian Auditorium. Thursday through Saturday performances will be at 7:30 p.m. and the Sunday matinee will begin at 2 p.m.

"The O'Conner Girls," written by playwright Katie Forgette, tells the story of a Minnesota family in 1997 grieving the loss of their patriarch. His wife and grown children reunite over the Christmas season to relive painful and joyful memories.

"You would think it's a sad play, but that's not the case," said play director Andy Henrickson. "We are all with family during difficult familial situations. The play is a great testament to the faith this family has."

Henrickson says part of the play's appeal will be its relatability.

"The family is Catholic and the parents are pre-Vatican II, so it speaks to different times," he said.

The relatability factor increases the probability of audience members getting invested in the play.

"It has a theme of reconciliation because of things that are revealed about this family over the course of the play," said Henrickson. "It speaks about the relationship the father had with his daughters and the tension there that came from his experience in coming back from the war a changed person."

The play has a small but powerful cast, according to Henrickson.

"We have a couple freshmen in it who are doing a good job," he said. "Sarah Furrow (Sarah O'Conner) was a non-trad who was in one of my plays in 2003-2004, and is back for this one, which doesn't happen often."

Henrickson was mindful of the play's showtime when selecting it for family weekend.

"When I go to a play, I often wonder how long it will be," he said. "This play isn't long so people can look forward to not giving up much of their time for it."

Henrickson believes audience members can also look forward to getting drawn into the story.

"People will be hearing and seeing things that will speak to them personally," he added. "The things that are talked about are things that are family subjects. People can look forward to some new talent and a mix of comedy and drama."

Tickets are available at [www.mtmc.arts](http://www.mtmc.arts) or by calling the MMC Theatre box office at 605-668-1234. The box office is located in the Roncalli Student Center.

The O'Conner Girls Cast List: Sarah Furrow (Sarah O'Conner); Rachel Shippy (Liz O'Conner); Alanna Binder (Martha O'Conner); Khristina Stevens (Margie O'Conner); Vincent Raia (David Stevens); Andy Henrickson (Director); Gabby Slowey (Stage Manager); James Hovland (Designer/TD); Dawn Ferris (Costume Designer); Catherine Pratt (Props).

Follow @ReillyBiel on Twitter.



KELLY HERTZ/P&D

Elizabeth (Rachel Shippy, foreground) discusses family relationships with her sister Martha (Alanna Binder) while going through some family mementos in a scene from "The O'Conner Girls," which will be presented by the Mount Marty College Theatre Department next week as part of the school's Family Weekend festivities.

What's Cooler  
than being cool?  
**COLD, HARD CASH.**  
Save up to **\$2,250**

**Carrier**

turn to the experts

Turn to your local **Carrier**  
expert for complete details on all  
rebate offers and financing options.

**Larry's**

**HEATING & COOLING**

920 Broadway, Yankton • [www.larrysheatingandcooling.com](http://www.larrysheatingandcooling.com)  
605-665-9461 • 1-800-491-9461

**Upcoming Opportunities in the...**

**MV**

MISSOURI VALLEY  
**Shopper**

- **Veterans Day**  
Deadlines November 3,  
Publishes November 10
- **Holiday Coloring Book**  
Deadlines November 6,  
Distribution begins December 1
- **Holiday Gift Guide**  
Deadlines November 20,  
Publishes November 24
- **Holiday Greetings**  
Deadlines December 18,  
Publishes December 22

Watch for these upcoming promotions  
in the Missouri Valley Shopper or if you  
wish to have your business or service  
featured please call 665-5884 today.

**MV**

MISSOURI VALLEY  
**Shopper**

319 Walnut St., Yankton  
[www.missourivalleyshopper.com](http://www.missourivalleyshopper.com)

CHRISTENSEN  
**FARM'S**

Combine your Passion with a  
Growing Career

Christensen Farms  
is seeking  
**Animal Care Workers for**  
Grow-Out Units and Sow Farms in your area!

**No Experience Required**

Excellent benefits including health, dental & life  
insurance, 401K, vision plan, paid time off  
& much more!

FT pay: \$12.50/hour

PT pay: \$11.25/ hour

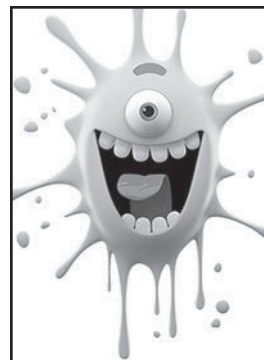
Apply online at

[www.christensenfarms.com](http://www.christensenfarms.com)

or contact Lucinda in HR at 507-794-8601

Equal Opportunity Employer

Respect • Integrity • Excellence • Adaptability • Innovation



**Don't let the FLU catch you!**

Hours:  
Mon.-Fri. 8am-8pm  
Sat. 9am-5pm  
Sun. 11am-5pm



**kmart pharmacy**

**no-cost flu shots**

with most insurance\*  
No appointment necessary.  
\* No co-payment unless  
required by your plan.  
(must be 18 years or older)

Flu Shots Available  
Trivalent - Preservative Free  
Quadrivalent  
High Dose for those 65  
years of age

Flu shots as low as  
\$22.99 for those  
without insurance

**[www.missourivalleyshopper.com](http://www.missourivalleyshopper.com)**

**NEWSPAPER DELIVERY ROUTES**



Enjoy short early  
morning hours!  
Monday-Saturday.

Earn \$200-\$400  
per month

**\$100.00\***  
Sign On Bonus

\*\$50 after 3 months of service, \$50 after 6 months of service.

Call The  
Circulation Department  
**605-665-7811**

YANKTON DAILY  
**PRESS & DAKOTAN**

**Schuermans Farm Supply**



**2015 Toro Timecutter SW**  
16 H.P. Toro Engine  
32" Single Blade Deck  
This mower is a true zero  
turn with a steering wheel.

**\$2,799**

(Bagger Extra)



**Hustler FasTrak SD**  
25 H.P. Kawasaki  
60" Deck, 156 Hours

**\$3,950**



**2011 JD Z930A**  
29 H.P. Kawasaki  
60" 7 Iron Deck, 270 hrs.

**This Week's Special**  
**\$7,700**

5 miles West of Tyndall on Hwy. 50 Corner of Hwys. 50 and 37  
[www.schuermansfarmssupply.com](http://www.schuermansfarmssupply.com)

Ph. (605) 589-3909 or Cell (605) 464-1113

