

1840 Lost and Found

Lost Gold Wedding set, lost around Walmart, 11/4, reward. (605)665-6528

Lost: Set of keys, Chevrolet key and remote. Jeep key, 2-house keys plus a couple of small keys and gray key fob. Reward (402)630-8779.

1850 Agriculture

Mobile Oil 1300, Delvac 15-40 diesel engine oil, 55 gallon factory sealed barrels \$11/gallon. 402-649-6711.

Several thousand tons of irrigated 20" rows of thin stemmed shredded corn stover in 3x4 mid size square bales. Pick up or delivered (605)460-0042.

Wanted South Dakota Farmland to Rent or Buy East of the Missouri River. Will pay top money for cash rent of 2012 crop year. Full payment for the year paid by January 15, 2012. Family business wanting to expand with good financing. Call Leonard (605)359-5011, Adam (605)359-0765.

1855 Alfalfa - Hay

Alfalfa/ Hay Large round, net wrapped, all cuttings, Call (402)640-4346.

Small square hay and shedded wood. Alfalfa, alfalfa grass mix and grass. Oak, hackberry and mixed. Prices negotiable. (605)760-1456

Want to buy: Alfalfa, picked-up or delivered, call Roy at Pleasant Acres, (620)804-1506.

Wanted: Alfalfa and grass hay. Round or square bales. Grinding and good quality needed. (605)957-4752

1870 Ag Equipment

Hutchinson bin fill augers 10"x72" with spring away hopper. All flighting special order 1/4" thick, hydraulic lift. 402-649-6711.

John Deere 362 ci gas engine fits 4400-6600-7700 combines and 4010 and 4020 tractors. Call 402-923-1395 or 402-923-0706.

Want to buy: Bobcat or other brands of skid loaders, running or not. Also attachments for sale. 402-750-1526.

Wanted: JD 7000 Series planters 4, 6, 8, 12-row; JD, Hiniker, Buffalo cultivators. 402-920-2125.

1020 Food - Beverage

Gundy's Year-round Farmers Market is taking orders for turkeys, geese, ham and prime rib. Saturdays, 9am-4pm at 804 Summit, Yankton. For orders (605)660-5922

1101 Announcements - Events

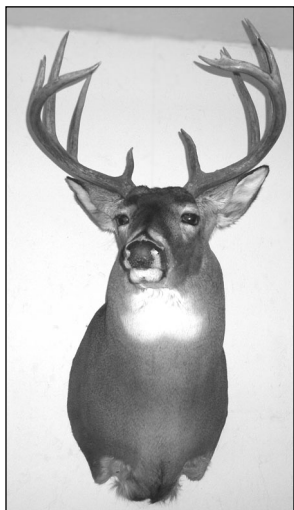
Business Hours of The Missouri Valley Shopper are as follows: **Monday through Friday, 8:00am-5:00pm. 319 Walnut St. (605)665-5884. Thank you for your continued business!**

PLEASE NOTE: This publication does not knowingly accept fraudulent or deceptive advertising. Readers are cautioned to thoroughly investigate all ads, especially those asking for money in advance or ads that sound too good to be true.

THE MISSOURI VALLEY Shopper cannot verify the validity of any advertisements placed by anyone. Readers are advised to approach any advertisement with reasonable caution.

100% Guaranteed Omaha Steaks - SAVE 64% on the Family Value Collection. NOW ONLY \$49.99 Plus 3 FREE GIFTS & right-to-the-door delivery in a reusable cooler, ORDER Today. 1-888-379-5192 or

www.OhamaSteaks.com/value73 use code 45069TLP (MCN)



Marcotte Taxidermy Award winning Lifelike Taxidermy! Quick turn around on your mounts. Sam Marcotte (605)857-0352.

Call Classifieds
665-5884

1101 Announcements - Events

Open (Fun/Practice) Team Roping
Saturday Nights 7pm-9pm
Everyone Welcome
\$20 to rope
each extra horse \$5
Triple "D" Arena
Maskell, NE
Call before you haul!!
(402)692-3199 or
(712)301-2964.

REACH 2 MILLION HOUSEHOLDS! Do you have a product, service, or business that would be helped by reaching over 2 million households throughout Iowa and the surrounding states? The Midwest Classified Network will allow you to reach these potential customers quickly and inexpensively. For more information concerning a creative classified ad call this publication or Midwest Free Community Papers at 800-248-4061 or get information online at www.mcn-ads.com (MCN).

1101 Announcements - Events

WANT TO ADVERTISE TO THE MIDWEST? Place your classified ads in the Midwest Classified Network anytime online at www.midwestfreeclassifieds.com (MCN).

WHIMSIES Holiday Festival
November 1st-15th
Daily Specials!
www.whimsies1.com
Hwy. 46 East of Irene, SD

1200 Cars

Classified deadline for the Missouri Valley Shopper is now Friday's at noon for the following Tuesday's paper.

2003 Chevrolet Impala 4-door, sandrift color, loaded, 30mpg., 76,000 miles. (605)760-3568.

2004 Chevrolet 2500 HD 4WD, silver, crew cab, 80,000 miles, excellent condition, with accessories, \$19,500. 402-920-1683.

1200 Cars

2006 Ford Escape, black, moonroof, 95K miles, new tires in January, very clean, great gas mileage. 402-750-6972; 402-329-6499.

2010 Ford Focus SE Auto, cruise, windows/locks, AM/FM CD/Sirius Radio, 31,600 miles, NADA Book \$15,500-\$12,998. (605)661-0321.

A-1 DONATE YOUR CAR!

Breast Cancer Research foundation! Most highly rated breast cancer charity in America! Tax Deductible/Fast Free Pick Up. 800-771-9551

www.cardonationsforbreastcancer.org
nani

CARS/TRUCKS WANTED!

Top \$\$\$\$\$ PAID! Running or Not, All Years, Makes, Models. Free Towing! We're Local! 7 Days/Week. Call Toll Free: 1-888-416-2330
nani

Read & Recycle!

1200 Cars

DONATE YOUR CAR to CANCER FUND of AMERICA to help SUPPORT CANCER PATIENTS. Tax Deductible. Next Day Towing. Receive Vacation Voucher. Call 7 Days 1-800-835-9372. nani

Donate Your Car! Civilian Veterans & Soldiers Help Support Our U.S. Military Troops 100% Volunteer Free same Day Towing. Tax Deductible. Call and Donate Today! 1-800-471-0538. nani

DONATE YOUR CAR, TRUCK OR BOAT TO HERITAGE FOR THE BLIND. Free 3 Day Vacation, Tax Deductible, Free Towing, All Paperwork Taken Care Of. 888-757-6941 (MCN)

Junk car & scrap iron removal. Ten years or newer must have title. Free pick up in SD, IA, NE. Paying Top \$\$\$\$ Cash paid on site. (605)760-2865 (605)660-3763.

USED EQUIPMENT

*Large Inventory at Great Prices!
New Equipment Coming In Daily!*

USED TRACTORS

- (A) 2008 CIH MX305 MFD, 2003 hrs. \$158,500
- (N) 2008 CIH 335 MFD, 1100 hrs., frt & rear duals \$165,000
- (A) 2005 CIH MX210, 2184 hrs \$95,000
- (C) 2004 MXM 190 MFD, 1833 hrs \$70,000
- (A) 2001 Case 621 CXT wheel loader, 3100 hrs ... \$61,500
- (N) 2001 CIH MX240, 4340 hrs \$75,000
- (C) 1998 CIH MX150 MFD, 5320 hrs., w/loader... \$53,000
- (A) 1997 CIH 8920 MFD, 6433 hrs \$60,000
- (C) 1997 CIH 8920 MFD, 6130 hrs \$60,000
- (N) 1993 JD 4960 MFD, 4371 hrs \$45,000
- (N) 1990 CIH 7130 MFD, 6764 hrs \$50,000
- (A) 1988 CIH 7130 2WD, 9585 hrs \$30,000

TILLAGE EQUIPMENT

- (A) 2005 CIH 30' crumbler..... \$6,800
- (N) 2002 Sunflower 1434-36' disk \$32,000
- (A) GP 2200TT Turbo Till, 22' \$28,000
- (C) CIH 4300 32-1/2' field cultivator \$12,000
- (A) CIH 490 disk, 28' \$4,500
- (A) Krause 4918A 24' disk w/harrow \$8,500
- (A) Unverferth 165 rolling harrow, 26' \$6,000
- (N) Unverferth 24' rolling harrow \$4,000
- (N) 1998 Kent 5329 29' field cultivator \$6,500

PLATFORMS

- (A) 2010 CIH 2020, 35', 3" cut \$29,500
- (N) 2010 CIH 2020, 25', 3" cut \$19,000
- (A) CIH 2020, 25', 3" cut \$25,000
- (C) 2009 FD70 MacDon 30' draper \$51,000
- (A) 2009 CIH 2020, 30' 3" cut, very good cond... \$24,500
- (A) 2007 CIH 2020, 30' 3" knife \$26,000
- (N) 1999 CIH 1020, 25', 1-1/2" cut, air reel \$13,500
- (C) 1998 CIH 1020 25', 3" cut, tracker, poly \$9,750
- (A) 1998 CIH 1020, 25'3", Cray cut \$12,000
- (A) 1998 CIH 1020, 20'3" knife \$8,000
- (C) 1997 CIH 1020 25', 3" cut, poly \$7,000
- (N) 1990 CIH 1020, 25', 1-1/2 knife \$7,000
- (A) CIH 1020, 30', good poly & knives \$6,000

SKID LOADERS

- (C) 2006 JD 317 1415 hrs., 72" bucket \$15,000
- (A) MT55 Bobcat track loader, 162 hrs \$16,000
- (A) Bobcat 78" grapple \$3,800
- (A) Grouser steel tracks w/rubber pads, fit S185... \$1,500
- (A) 68" Lo Pro bucket, 100 hrs \$750

COMBINES

- (A) 2011 CIH 6088, 280 sep hrs \$218,000
- (A) 2010 CIH 5088, 201 hrs \$199,000
- (A) 2008 CIH 8010, 700 sep hrs \$200,000
- (A) 2006 CIH 8010, 1,122 hrs \$170,000
- (A) 1999 CIH 2388, 2,119 hrs \$74,000

CORN HEADS

- (A) CIH 2608 chopping corn head, tracker..... \$48,000
- (A) 2007 CIH 2412 30" CH..... \$42,000
- (A) 1998 CIH 1083 30" CH..... \$16,000
- (N) 1992 CIH 1083, 8 row 30"..... \$8,500
- (N) 1991 CIH 1083, 8 row 30"..... \$8,500
- (N) 1984 IH 983 30" CH..... \$5,500

PLANTERS

- (A) 2010 CIH 1250 24 row 30", bulk fill. \$128,000
- (N) 2009 CIH 1240 16 row 30" \$58,000
- (N) 2008 Kinze 3600 twin row 32" row \$72,000
- (N) 2007 CIH 1240, 12 row, bulk fill \$58,000
- (A) 2003 Kinze 3600 16/31 row 30"..... \$59,500
- (A) Kinze 3600 16/31 row 30" \$85,000
- (A) JD 1530 20' 3 pt. drill, 15" \$15,000

HAY EQUIPMENT

- (C) 2002 MacDon 9352 w/16 HD S.P. \$48,000
- (N) 2008 CIH SCX100 mower cond., w/HDX182 head. \$20,000
- (C) Vermeer R23A twin rake \$9,000
- (A) Vermeer 605J, twine baler \$7,900
- (C) CIH 8465A baler, 1000 PTO \$7,000
- (N) Hesston 1160 14' mow cond., 540 PTO \$3,000

MISCELLANEOUS

- (O) Artex CB900 manure spreader \$48,000
- (A) Kinze 840 grain cart w/tarp \$24,500
- (N) 1995 Kinze 840 grain cart \$20,000
- (A) Orthman 797 grain cart \$18,000
- (N) Ficklin CA1300 grain cart \$12,000
- (A) Feterl CSWA 12x72 auger \$8,500
- (A) BJM 2912T feeder wagon w/scale \$6,000
- (N) Feterl 10x72 auger \$5,500
- (C) 1998 Feterl 10x66 hydra auger \$5,200
- (A) Easy Glide H30 header cart \$3,500
- (A) Henke H14 feeder wagon \$2,850
- (A) New Idea 214 manure spreader \$2,700
- (A) 2006 JD 125 mower w/snowblower \$2,500
- (N) Westfield TR 10x61 auger \$700

1984 INTERNATIONAL

270 HP Cummins, 9 speed transmission with a 2007 24 ft. grain trailer package
\$20,000

Get Ready For Cold Weather!
Special pricing on Howe's Diesel Treatment. \$10.50 per 1/2 gallon

trucktrailerinc.com
TRUCK TRAILER SALES & SERVICE, INC.
East Hwy. 50, Yankton, SD • 605-665-7952

DAKOTA STEEL INC.
Canton, SD
◆◆◆ STEEL FACTORY ◆◆◆

- 29 Gauge Steel
- High Quality 100,000 P.S.I. Tensile Strength
- Cut to length from 1" - 60 ft.
- .0155 mill thickness before paint
- .017 mill nominal thickness after paint
- 40-year paint warranty

Call for Prices.
"We Roll Our Own Steel For You We'll Roll You a Deal"

Bottom Dollar • Factory Direct • Wholesale Prices
Post Frame Building Packages or Steel Sheeting
605-987-9080 • 605-987-4306 fax

A-ALBION C-CROFTON N-NELIGH O-NORFOLK

Kayton International, Inc.
Web Site: www.kaytonint.com
2630 State Hwy. 14, Albion • 402-395-2181 • 800-248-2215
1211 W. 2nd, Crofton • 402-388-4375 • 800-798-4376
West Hwy. 275, Neligh • 402-887-4118 • 800-247-4718
South Hwy. 81, Norfolk • 402-371-3656 • 800-456-0317

AFTER HOURS PARTS PHONE
ALBION.....402-741-0055 NELIGH.....402-929-0120
CROFTON...605-660-6175 NORFOLK...402-750-9292

CASE IH AGRICULTURE

Financing Available W.A.C.
©2008 CNH America LLC. All rights reserved. Case IH and CNH Capital are registered trademarks of CNH America LLC.

CNH CAPITAL