

Dining & Entertainment



Every day is bright and sunny with a classified ad to make you MONEY! Place your ad today with the SHOPPER

MISSOURI VALLEY SHOPPER
319 Walnut, Yankton SD
605-665-5884
Fax: 605-665-0288



Cornhusker Run
FREE Bus Ride
TO FORT RANDALL
Wednesday, July 14, 21, August 11, 25, ... 9:00 a.m. Frying Pan Departure
\$10 Per Person & You Get \$30 For \$20 Making Your Ride FREE
For More Info Call (402) 379-1061

23rd Annual Northeast Nebraska
FARM TOY SHOW
July 11 • 9 a.m. - 4 p.m.
NECC LEARNING CENTER, NORFOLK, NE
Call (402) 371-7918

Let Us Do All The Work!

Sunday Brunch • 10:30 a.m.



JoDeans.com
Yankton • 605-665-9884
OPEN SEVEN DAYS A WEEK



Thunder In the Dirt! **Carroll, NE OUTLAW SUPER NATIONAL TRUCK & TRACTOR PULL** 24th Annual

Texas 2 Step
Columbus, TX

Saturday, July 17, 2010
7:00 p.m.

Admission:
Adults - \$20.00
Children Under 12 \$5.00
Tickets Sold at Gate

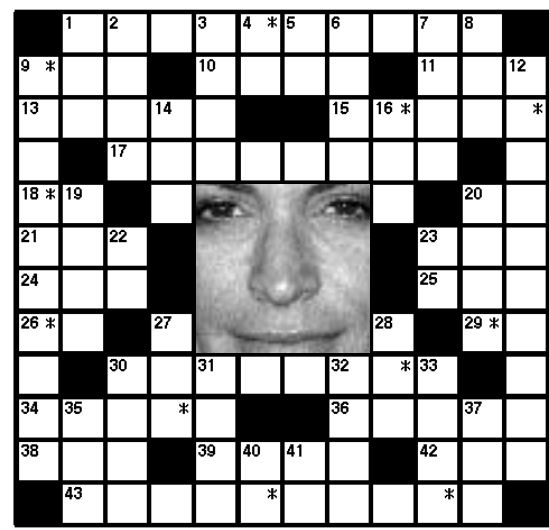
5700-8200 Super Stock
7200 Modified
10,000 Pro-Stock
Super Farm Stock
2WD & 4WD Super Modified Pickups

Sweet Pain
Curt Ulmer
Menard, SD

CARROLL PULLING ASSOC.
SOUTH HWY. 57
CARROLL, NE
For More Information 402-585-4598
Day of Pull 402-585-4594

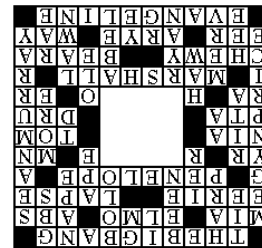
Gang Green
Darryl Puffer
Harlan, NE

TV CROSSWORD



The identity of the featured celebrity is found within the answers in the puzzle. In order to take the TV Challenge, unscramble the letters noted with asterisks within the puzzle.

- ACROSS**
1. ___ Theory
 9. Actress Kirshner
 10. "Sesame Street" fellow
 11. Sit-up targets, for short
 13. "___, Indiana" (1991-92)
 15. Brief memory failure
 17. "Criminal Minds" role
 18. MMX, for one: abbr.
 20. Alphabetic center
 21. ___ Long
 23. Lynette's "Desperate Housewives" hubby
 24. "Harper Valley ___"
 25. Actress Joanne
 26. Acuff's initials
 29. Most-watched series of the 1998-99 season
 30. Role on "How I Met Your Mother"
 34. Like taffy
 36. ___ grudge; stay mad about a past offense
 38. Ending for musket or pamphlet
 39. Actor Gross
 42. "Caitlin's ___" (2000-02)
 43. Lilly of "Lost"
- DOWN**
7. Back of the neck
 8. Shaw's monogram
 9. Actress on "Rules of Engagement" (2)
 12. "NCIS" actor (2)
 14. Suffix for health or crisp
 16. King Kong, for one
 19. ___ Moreno
 20. "___ Tales of the City"; 1998 Olympia Dukakis miniseries
 22. Battery size
 23. Six-pointer, for short
 27. See 35 Down
 28. Vaudevillian Olsen
 30. Mr. Griffin
 31. Robert or Irene
 32. Fratricide victim
 33. Green expanse
 35. With 27 Down, humorous country music series (2)
 37. ___ Dawn Chong
 40. Initials for Goulet
 41. One spoken to, in the Bible



PIERCE COUNTY FAIR

WEDNESDAY, JULY 21 through SUNDAY, JULY 25, 2010

FREE GRANDSTAND Pierce County Fairgrounds ~ Pierce, Nebraska \$10 RIDE COUPON WITH PAID ADMISSION
FREE PARKING ENTRY DAY ~ Wednesday, July 21

For information prior to fair, call 402-329-6225 • During the fair call 402-329-4327 or www.piercecountyfair.org

WEDNESDAY, JULY 21
YOUTH TEAM PENNING -- 6:00 p.m.
TEAM PENNING & SORTING -- 7:00 p.m.
ADDED PURSE

THURSDAY, JULY 22
NNPAI Tractor Pull 1:00 p.m.
Nebraska Bush Pullers 7:00 p.m.

FRIDAY, JULY 23
BULL-A-RAMA
8:30 p.m.
Sponsored by CWJAG, Rock 97.5
SADDLE FOR WINNER
Last Round Calcutta

SATURDAY, JULY 24
Kids Pedal Pull -- 1:30 p.m.
Joe Nichols 8:30 p.m.
Side Step (to open and Dance following concert)

SUNDAY, JULY 25
Nebraska Garden Tractor Pull 12:00 noon
Hypnotist Mike Prochow 3:00 p.m.
Demolition Derby 5:30 p.m.

SATURDAY, JULY 24 AND SUNDAY, JULY 25
TEAM ROPING AND RANCH RODEO
ADDED PURSES!
CONTACT ROBERT SEEGBARTH FOR MORE INFORMATION 371-4995

ADMISSION: WEDNESDAY NIGHT FREE
\$10 per day -- \$30 Season Pass • 12 and under FREE
CARNIVAL: Mac's Amusements -- Armbands every day \$25 • Advance Tickets Available And Receive FREE Carnival Tickets