

**INTERESTED IN THIS SPOT?**  
Call 665-5884 to place your ad here.



# MOODY'S

*We Make It Easy!*

[www.moodymotor.com](http://www.moodymotor.com)

## 2011 CHEVY EQUINOX LT 4X4



#213708

**\$24,995**

## 2011 GMC TERRAIN SLE AWD



#337250

**\$25,995**

## 2011 FORD EDGE SEL



#B15207, 20,000 miles, silver

**\$24,995**

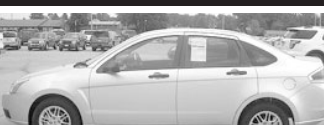
## 2010 CHEVY IMPALA LT



#171870

**\$13,995**

## (2) 2010 FORD FOCUS



#212846, 4 door

**\$13,995**

## 2011 GMC CANYON SLE CREW CAB 4X4



#117190

**\$24,995**

## 2009 FORD F-150 EXT. CAB 4X4 XLT



#C75895

**\$20,995**

## 2011 FORD F-150 XLT 4X4 SUPER CREWS



#B11022

**\$28,900**

## 2011 CHEVY SILVERADO 1500 LT CREW



#110780, WHITE

**\$25,995**

## 2011 DODGE RAM DAKOTA QUAD CAB 4X4



#525776

**\$24,995**

## 2010 FORD F-150 SUPER CREW XLT 4X4



#B82453, Long box, 15,000 miles

**\$29,995**

## 2007 FORD FIVE HUNDRED SEL



#101567,

**\$11,995**

## 2004 FORD F-150 SUPER CREW 4X4



#C11246

**\$12,995**

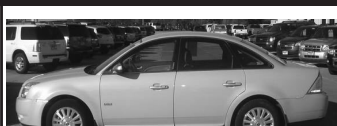
## 2010 FORD F-250 CREW CAB LARIAT



#A89617, 4x4

**\$29,995**

## 2008 MERCURY SABLE



#G14457, 33,000 miles

**\$16,500**

## 2011 FORD ESCAPE XLT



#B92404

**\$19,995**

## 2008 FORD F-250 CREW CAB LARIAT 4X4



#B85078, diesel, loaded

**\$28,995**

## (2) 2010 FORD FUSION SE



#373752, 4 door,  
p. windows/locks/seats

**\$17,995**

# MOODY MOTOR CO.



**1-800-745-5650**

OPEN Monday - Friday 8:00 a.m. - 5:30 p.m.  
Saturday 8:00 a.m. - 4:00 p.m. • Sunday 12:00 p.m. - 4:00 p.m.

Niobrara, Nebraska • Business Phone 402-857-3711 • 1-800-745-5650  
[www.moodymotor.com](http://www.moodymotor.com)

**OVER 250 VEHICLES ON THE LOT!**

## 1660 Acreage - Lots For Sale

Be ready to build your home this Spring. Do you prefer: Just across from Hillcrest Country Club on Donohoe Blvd., \$37,900 or 1 wooded acre in lake area, \$22,500. Call Virginia Larson (605)661-0418, Anderson Realty, LLC.

**For Sale: Lots of lots!** Call Jim Tramp, (605)661-2192.

**GEORGIA LAND- NEW YEAR SALE!** Beautiful 1acre-20acres homesites. Amazing weather, Augusta area (Washington County). Low taxes. Low down Payment, Financing from \$149/month. Call Owner 706-364-4200. nani

**Ridgeway North Development** has numerous lots available. North of Hillcrest Golf Course. Call Kirby, (605)665-0524 or (605)660-1422.

## 1700 Merchandise

**Firewood for sale.** Call (605)660-0168.

## 1705 Items \$100 or Less

**10 Cat Lovers Figurines** 3 for \$5. Your choice from big collection. Cash only. (605)464-4575.

**2-end tables \$15/each;** 2-bar stools \$15/each. Call (605)589-3965.

**32" Quasar console TV,** works good \$50. Call (605)589-3445.

## 1705 Items \$100 or Less

**48" JVC projection screen** TV, 2004 year, good shape, \$100. Call (605)589-3843.

**Avon Cape Cod glassware,** 10 items in the box \$10/each. Call (605)260-5355.

**Box of books.** 50 paperbacks at 50¢/each. 100 hardcovers at 75¢/each. Buy as many as you want. Call (605)665-7550.

**Couch and loveseat** very good condition, light green flowered. \$100/both. Call (402)270-2395.

**For Sale: Easy Shaper** home exercise device. New in box never used. \$45. Call (605)660-1027.

**For Sale: Girls** 21 speed, 24" Mongoose mountain bike, less than a year old, just like new. \$100. Call (605)660-1027.

**GE 30" overhead** microwave with vent. Like new. Almond. \$50. (605)665-4264

**Large business size,** 4-combination, double-door safe in complete working condition. Cary Safe Company brand. \$100. (605)267-2228

**Mix Powerhouse Total Gym,** like new, used only a few times, \$99. Call (402)388-2409.

**Ralph Lauren men's** suit size 50 reg. jacket 42/30 pant \$50/OBO, JVC 3-CD stereo \$25, kids art easel \$5, 5-point harness car seat \$5, (605)661-0202

## 161 Acres of Clay County Farm Land (Spirit Mount Township)

## AT AUCTION

**Sold in 2-Tracts**

**Thursday, Feb. 2 • 10:30 a.m.**

**Sale Site:** Corner of 313th Street and Bluff Road. From Vermillion, SD: Highway 50 By-pass & Highway 19 junction- go 1 mile North then 4 miles West on Bluff Road OR From Meckling, SD: 1 mile North on 457th Ave then 4 miles East on 313th Street.

**Tract I:** FSA Office shows 108.12 acres tillable with a corn base of 42.7, and a bean base of 63.6. Also included on this Tract are (2) 18x16 steel bins. This is a nice flat tract of land with a 0 to 2% slope.

**Tract I Legal:** The SE1/4 Sec 21-93-52, except F&M Rayman Tract I, Clay County, SD. The acreage & pasture are not part of Tract I. 124.27 +/- surveyed acres.

**Tract II:** Tract II is located 1/8 mile east of 313th Street & Bluff Road. FSA Office shows all tillable with a corn base of 15.3 and a bean base of 22.9. This is a nice tract of land with a 0 to 6% slope.

**Tract II Legal:** The W1/2, SW1/4 except F&M Rayman Tracts 2 & 3, Sec 22-93-52, Clay County, SD. Approximately 37 acres all tillable, correct acres will be determined by survey.

**TERMS:** 10% non refundable down payment due day of auction with the balance due on closing day of March 2, 2012. Possession on closing. Taxes for 2011 due in 2012 will be paid by the seller. Title Insurance and closing costs will be split 50/50 between buyer & seller. Clay County Abstract & Title Co is the closing agent. Auctioneers are acting as agents for the sellers in this transaction. This farm is free & clear to farm or rent for 2012.

**Peggy Nelsen, Nancy Gruenhagen, Penny Valentine - Owners**

For a free, property information packet including the maps, please contact Girard Auction & Land Brokers, Inc., or go to [www.GirardAuction.com](http://www.GirardAuction.com).



**Girard Auction & Land Brokers, Inc.**  
(605) 267-242 • Toll Free: 1-866-531-6186  
[www.GirardAuction.com](http://www.GirardAuction.com)  
[www.GirardBid.com](http://www.GirardBid.com)

[www.GirardAuction.com](http://www.GirardAuction.com)

Marv Girard, BA #12399; Ken Girard, CAI, AARE Broker #10183; Mike Girard BA #13549