

We Have Parts!
Parts for Tractors, Combines, Machinery
SALEM TRACTOR PARTS
Salem, SD 877-530-4010



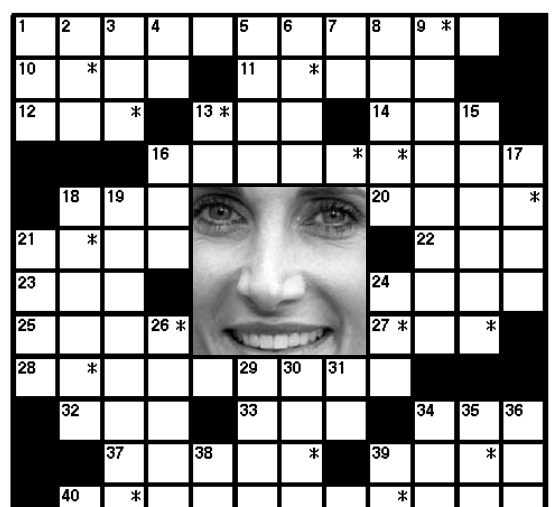

4-2000 FREIGHTLINER 112'S
ISM CUMMINS 370 HP
10 SPEED TRANSMISSION
A/R SUSPENSION
LOW MILES
STARTING AT \$18,000

TRUCK TRAILER SALES & SERVICE, INC.
East Hwy. 50, Yankton, SD
605-665-7952 • trucktrailerinc.com

Ron's Auto Glass
1915 Broadway • Yankton, SD
(Next to Dairy Queen)
605-665-9841
Free Estimates • Topper Glass
Plexi Glass • Mirrors • Rock Chip Repair
Windshield Replacement • Free Mobile Glass Service



TV CROSSWORD



The identity of the featured celebrity is found within the answers in the puzzle. In order to take the TV Challenge, unscramble the letters noted with asterisks within the puzzle.

- ACROSS**
- Actor on "Private Practice" (2)
 - Series that starred an "All in the Family" actor
 - "You're a fine ____ talk"; words to a hypocrite
 - Stewart, for one
 - "Poison ____"; 1992 Drew Barrymore film
 - "Rub-a-dub-dub, three men in a ____"
 - Role on "Grey's Anatomy" (2)
 - Whitney and McKinley; abbr.
 - Gilbert
 - Corp. bigwigs
 - Damp
 - Elem. school subjs.
 - Lunch orders, for short
 - Mr. Epps
 - Suffix for heir or count
 - Actor Sam
 - Refusals
 - "Seinfeld" setting; abbr.
 - Ortiz of "Ugly Betty"
 - Second showing
 - "All Night" (1981-82)
 - Role on "Castle" (2)
- DOWN**
- "Runaway ____"; 1997 Judge Reinhold TV movie
 - Health ins. carrier
 - Skelton
 - "Amish ____ the City"
 - "For Your ____"; 1998-2002 series
 - Cameo gemstone
 - "Are ____ There Yet?"; 2005 Nia Long movie
 - Singer James & others
 - Soul jazz and blues singer with more than 70 albums (2)
 - Setting for "Roseanne"; abbr.
 - "The Green ____"; 1968 John Wayne movie
 - Pack animal
 - Tubs
 - Actress and singer Ethel
 - "____ I Tora!"; 1970 Jason Robards film
 - "The ____"; 1994 Brandon Lee movie
 - Pa Cartwright
 - Adjust the alarm
 - Give the cold shoulder to
 - Daly
 - "The ____"; 2003-07 series for Kelly Rowan
 - King Kong, for one
 - "____ Games"; 2003 Ed Begley Jr. movie
 - Adam
 - Prefix for play or heat
 - "____ Crackerby!"; 1965-66 series for Burl Ives

Melina Kanakaredes Solution

www.missourivalleyshopper.com

1220 Vans
1991 Ford Econoline van, 3/4 ton. Also 1990 Mercury Sable need little work. (402)640-8387.

1240 Boats - Watercraft
2006 Kawasaki Mule 4WD new condition. \$4,200/OBO. 1977 Mariah Jet boat \$4,700/OBO. 402-215-3918.

1245 RVs - Campers
Spring Camper Show February 19th, 20th, and 21st. www.jerrystrailers.com

1250 Motorcycles
Buying ATVs, motorcycles, water-craft, snowmobiles, running or not, also have parts for sale. (402)371-7002

1250 Motorcycles
WANTED OLD JAPANESE MOTORCYCLES KAWASAKI Z1-900 (KZ900)1972-1976, KZ1000 (1976-1980), KZ1000R (1982,1983), Z1R, S1-250, S2-350, S3-400, H1-500, H2-750, HONDA CB750 (1969-1975), SUZUKI GS400, GT380, CASH PAID, FREE NATIONWIDE PICKUP. 1-800-772-1142, 310-721-0726 (MCN)

1255 ATVs
1994 Art-Cat Jag deluxe, 440 with 1,400 miles, always shedded with cover and hand warmers, excellent condition. (402)394-7532.

1405 Accounting Services
Convenient Tax Service
Personal, Business, Farm and all states. "We Come To You". Authorized E File provider. Over 30 years experience. Call for appointment (605)660-3285.

1410 Agriculture
4WD QUALITY OFF-ROAD MINI TRUCKS FOR SALE 40MPG automotive engine, HEATER, full FUNCTION Cabs & more, several models to choose from. www.ulmer-farmservice.com (605)387-5660 or (605)661-5050, Menno, SD.
Tractor chains, 18-4-38, excellent. 402-649-3615.

1410 Agriculture
Sucker Rod & Pipe For Sale. All sizes for fencing and manufacturing. Menno, SD. (605)387-5660 (605)661-5050.

Tired of waiting for processing? Call the new plant in town! (402)337-0052. 1-888-EAT-BEEF. Nebraska's Finest Meats. Randolph, NE.
Want to buy: Lockwood center pivot and 75hp. hollow shaft irrigation motor, pump panel. (402)750-9117 cell.

1455 Computer - Internet
Geeks-In-Route & On-site Computer & Computer Networking Services by A+ & Microsoft or CISCO Certified Technicians. If We Can't Fix It, It's Free! MC/DIS/AMEX/VISA. 1-866-661-GEEK (4335). nani

1485 Home Improvement
KELLY'S HOME REPAIR. Doors, trim, laminate flooring, painting, caulking. No project too small. Interior/exterior projects. (605)661-9903; (605)665-9417.

1490 Lawn - Landscaping
WILL REMOVE TREE Stumps. Schumacher Tree Stump Removal, Insured. Dennis Schumacher, Call (402)388-4487.

1555 Dogs - Puppies
AKC white, yellow Labs excellent pedigree, first shots, wormed, farm raised, parents on site. 402-841-3996.
AKC Yorkie puppies tiny and adorable ready now. 402-329-4407 or 402-841-2639.

Leader Angus Farm
38th Production Bull Sale

Selling 85 Head

- 55 2-year old bulls
- 15 yearling bulls
- 15 bred heifers

Saturday February 20, 2010 1:00 p.m.

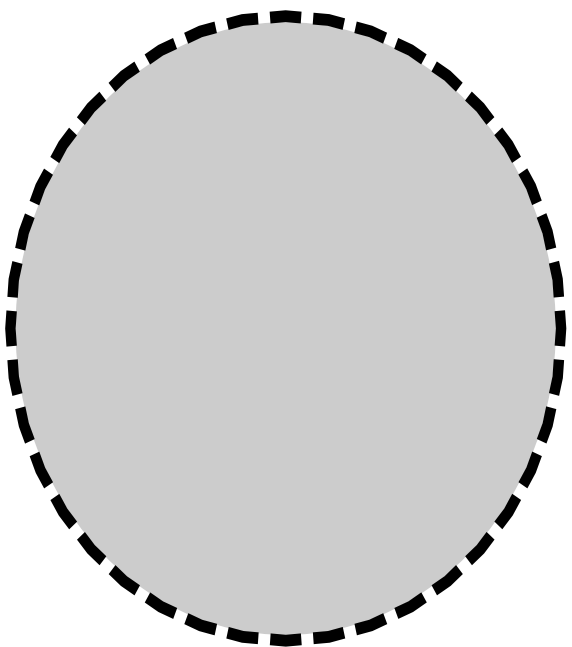
Featured Sires:
Leaders Integrity 70
Leaders Midland 1
Leaders Negotiator 45
Leaders Network 50
Leaders Objective
W.K. Decade 6586
W.K. Midland 3193

Baldrige Rebounder R315
Connealy Baron 193
Larkota Bruno 6151
Larkota Desire 613
Larkota Final Answer 703
Larkota In Focus 624
Woodhill Mainline

Contact:
Leader Angus Farm
Gordon or Mark Leader
1-402-388-4949

Sale Will Be Held At The Ranch...
2 Miles East of Crofton, NE on Highway 12
or 2 Miles West of the Highway 81 and 12 Intersection

Put Your Coffee Cup Right Here!



NOW TRY TURNING THE PAGE.

Don't you wish your advertising could stop consumers that effectively? Let's face it, most of the time it gets lost in the shuffle. It takes a certain ingenuity to stand out in a crowd. You've got to be provocative. Unpredictable. A little smarter than the next guy - and you've got to have a real feel for the medium you're working in. We put those talents to work for advertisers every week - and at no extra cost. It works for them. And you'll have to admit, it just worked for you!

MISSOURI VALLEY SHOPPER 319 Walnut, Yankton SD
605-665-5884
Fax: 605-665-0288