

**1875 Livestock - Poultry**

**For Sale: Angus** Polled Charolais & Angus Hybrid Bulls. Performance & Fertility Tested. Excellent Quality & Disposition. Good Selection Reasonably Priced, WAG-ONHAMMER RANCH, [www.wagonhammer.com](http://www.wagonhammer.com). Phone 402-649-2719.

**Polled Hereford Bulls** performance information available guaranteed breeders. Huwaldts Herefords. 402-337-0784 or 402-360-4387.

**Polled Yearling Charolais** bulls. Bloodlines of Milestone, fore front, asset. No creep feed, good-disposition reasonably priced. All Sires are 4+ lb gainers. 605-387-5366 or 605-951-4728.

**Purebred Angus Bulls**, Yearling and 2 year old, bred for calving ease and carcass quality. **O'Brien Angus, Tilden, NE.** 402-368-2195 or 402-649-1327.

**Registered Yearling** and 2 year old Angus Bulls. Many are suitable for heifers. Also, 2 Sim Angus bulls. Marnie Schieffer 402-388-4532 or John Schieffer 605-661-8531.

**2000 Notices**

**Business Hours of The Missouri Valley Shopper are as follows:**  
Monday through Friday 8:00am-5:00pm.  
319 Walnut St. Yankton (605)665-5884.  
Thank you for your continued business!  
Deadline is 12Noon on Fridays for the following Tuesdays MVS.

THE MISSOURI VALLEY Shopper cannot verify the validity of any advertisements placed by anyone. Readers are advised to approach any advertisement with reasonable caution.

**Interested in this spot?**



Call 665-5884 to place your ad here.

■SDDA

# Top Monster Trucks to Appear at SD State Fair



**HURON, S.D.** Four of the nation's top monster trucks will roar into the South Dakota State Fair in Huron on Labor Day afternoon, Sept. 7, according to Dakota State Fair Speedway track promoter Orville Chenoweth. Chenoweth is in his 20th year as promoter of the Dakota State Fair Speedway and wants to make 2015 special and memorable.

"The first truck signed is MENACE which stands 15 feet tall, 12 feet wide and weighs a whopping five tons," said Chenoweth. "MENACE is valued at \$250,000 and packs a 1,500 horsepower engine under the hood."

Joining MENACE is nationally known truck FREEDOM KEEPER honoring all past, present and future military troops. The third high flier is BOUNTY HUNTER, the 2005 World Freestyle Champion. And fourth is IRON OUTLAW known for its massive 1,650 horsepower engine; one of the most powerful engines in the world.

This special State Fair Labor Day event is sponsored by Mack Metal Sales and will also feature the return of the very popular Soccerball Demo Derby.

The 2015 South Dakota State Fair will run from Thursday, Sept. 3, through Monday, Sept. 7. Channel Seeds preview night will be Wednesday, Sept. 2. This year's theme is "Sew it. Grow it. Show it." For more information on State Fair events, contact the Fair office at 800-529-0900, visit [www.sdstatefair.com](http://www.sdstatefair.com) or find them on Facebook or Twitter.

Agriculture is South Dakota's No. 1 industry, generating \$25.6 billion in annual economic activity and employing over 115,000 South Dakotans. The South Dakota Department of Agriculture's mission is to promote, protect, preserve and improve this industry for today and tomorrow. Visit us online at <http://sdda.sd.gov> or find us on Facebook and Twitter.

# Small Business Virtual Conference April 24

**BROOKINGS, S.D.** - SDSU Extension will host the Small Business is Everybody's Business Virtual Conference April 24, 2015 at eight locations across the state.

"Rural communities have real advantages when it comes to attracting new entrepreneurs and retaining small businesses," said Peggy Schlechter, SDSU Extension Community Development Field Specialist. "This virtual conference will provide communities an opportunity to hear nationally-known speakers share information about how rural places can support small businesses."

Site locations for this virtual conference include: DeSmet, Faith, Gregory, Irene, Sisseton, Tri-Valley School, and Wall. For registration and location details, visit the iGrow Store.

Dell Gines, Senior Community Development Advisor, Federal Reserve Bank of Kansas City is the keynote speaker. Gines has spoken to audiences across the nation on entrepreneurship based economic development, entrepreneurship ecosystems and developing local rural and urban economies through developing entrepreneurship growth strategies. He is the author of the "Grow Your Own Guide to Entrepreneurship Based Economic Development."

Craig Schroeder is the afternoon keynote speaker. Schroeder is with the Center for Rural Entrepreneurship in Lincoln, Neb. Schroeder has committed

his career to helping rural communities create more prosperous futures. Schroeder's work extends across 47 states involving well over 40,000 youth.

Closer to home, Schroeder created the Youth Attraction Formula© to help rural communities in the Great Plains set attainable goals for addressing chronic youth out-migration and population loss.

In addition to keynote speakers, each site will host a panel of local leaders and businesspeople sharing information on local outlook and support for entrepreneurs. Participants from the same community and region will also have time to strategize about ways they can promote small business growth and retention.

Who should attend? Community leaders, business owners, prospective business owners, young people, school board members, economic development board members, city council, county commissioners and anyone who is interested in the vitality of his/her community.

This conference is sponsored by SDSU Extension, USDA Rural Development, West River Electric and the REED (Rural Electric Economic Development, Inc.) Fund.

For more information, contact Schlechter at 605.394.1722.

- See more at: <http://igrow.org/news/small-business-virtual-conference-april-24/#sthash.gBp5oxpS.dpuf>

■iGrow

Visit our Web site at  
[www.missourivalleyshopper.com](http://www.missourivalleyshopper.com)

## Bon Homme County Lakeview Properties

# AUCTION

**Saturday, May 2 -- 10 a.m.**

**Auction to be held at the site located** from Springfield, SD, 2 miles north to Apple Tree Road (311 Street) then 3 miles east OR from Country Ford, Tyndall, SD, 7 miles south and 3 miles east OR from Yankton, SD Walmart, 13 miles west to Highway 52 then 5 1/2 miles west to Apple Tree Road then 5 miles south and west.

**REAL ESTATE** consists of a 30 + - acre tract presently grazing land plus two 3 + - acre lots. This beautiful property located adjacent to the Apple Tree community and Sand Creek Recreation Area offers breathtaking views of Lewis & Clark Lake, all just a few hundred yards from lake access, campground, water sports and the most premier waterfowl hunting and fishing available anywhere. This rare find is rezoned rural residential making it a prime candidate for development. This property offers great access on a paved county road, all less than 5 miles from Springfield, SD which features a hard surface air strip and one of the highest regarded 9 hole golf courses in S.D.

**Investors, Developers, Outdoor Enthusiasts check this one out!**

Tract 1: Apple Tree Heights 2nd Add in the W 1/2 of the NW 1/4 of 16-93-59. 30 + - Acres  
Tract 2: Lots 3&4 in Apple Tree Heights in the NE 1/4 of 17-93-59. 2 - 3 + - Acre lots to be sold choice or 2X the money

**TERMS & CONDITIONS:** 20% non-refundable down payment day of auction with balance due at closing. Title Insurance and closing service fees split 50-50 between buyer and seller. 2014 taxes paid by seller. Possession upon receipt of final payment. Announcements day of auction take precedence over printed material. Peterson Auctioneers are representing seller.

**LYLE COLEMAN, Owner**

### Peterson Auctioneers

Glen Peterson, RE #234  
605-369-2638 - Springfield, SD  
Farm - Household - Real Estate  
[www.petersonauctioneers.com](http://www.petersonauctioneers.com)  
Lee Wittmeier, Tyndall, SD

For more info contact

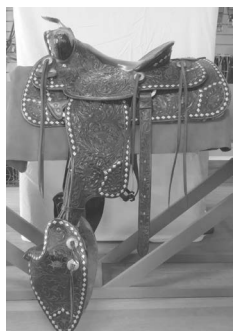
Glen Peterson at 605-369-2638 or feel free to walk the property at your convenience

# C&S Saddle Shop Moving Auction

**Sunday, April 26, 2015**  
**5th and Broadway Yankton, SD • 1:00**

### Auctioneers Note:

We have sold our building and we are moving North! North Broadway that is. Downsizing, so we have a variety of items for sale.



**Equipment:** Singer commercial sewing machine 300W101 double needle-1" space-chain stitch, with electronic control #SV104, Lamsteel electric lift table, American model # 500 shoe machine, Singer upholstery sewing machine with commercial table model #21W180, United Eyeletting machine model A #286.

**Store Supplies:** 21 white plastic-coated wire grids, many hooks, brackets, wire and acrylic baskets and shelves, waterfalls for slat wall, grids and peg boards, thick glass shelving, new gift boxes in various sizes, display rack for blankets

(quilts), country style wood display, locking display cases for glasses and counter top jewelry case, floor-style, older glass display case, book shelves, double take-apart clothes rack, 5 rolling saddle racks, many used cabinets of different sizes, Bee Lee Pearl Snap Kit for clothes and many snaps for clothes.

**Saddle Repair Supplies:** 20 yds of 5 ½ ft wide artificial fleece lining, large roll of 5' tan Naugahyde, large roll of foam with reinforced backing, lots of cotton webbing in various sizes, webbing hardware, upholstery supplies, nylon webbing in various colors, very good leather pieces in various sizes, scrap leather lace in various sizes, sheep wool pieces, 1000's of rivets, new saddle trees, busted, used saddle trees, used saddle parts, saddle hardware (new and used), harness hardware, harness spots and diamonds, 30-½- & 1-lb spools of thread in various colors, large parts rack with trays, 3 tugs for draft horse harness, any used saddles that we have at time of auction.

**Collectibles:** Beautiful black Parade Saddle with matching headstall, breast collar and tapaderos, 2 Silver Spurs Sets, very ornate from Cowperson Tack Indian Territory Oklahoma, Joe Camel Cigarette cup holders, new, never opened 2 Joe Camel Cigarettes with a KC Chief Lighter, kids' books, old games, vintage table with 2 red chairs, Tim Cox framed and matted picture, Dan Patch poster from Savage Mineral Co, horse décor, 1989 Topps baseball cards uncut sheets boards 2 & 4, Bud Light Clydesdale Poster, small wooden barrel.

**Miscellaneous:** Craftsman 9hp 29" cut snow blower in very good condition, Sanborn 3/4hp air compressor, Genie garage door brand new, GE refrigerator, Van Schroeder wall-cleaning machine, used very little, chiropractic bed, '07 Kia car seats, '90 Oldsmobile car seats, Christmas decorations, records, tri-pod for goose-neck trailer, garden hoses.



**Sherry Soukup-Neuharth Auctioneer**  
402 W 25th Street, Yankton, SD  
605-665-5266 or 605-660-3931  
Email: [soukupauctions@aol.com](mailto:soukupauctions@aol.com)  
Call Sherry for your next Auction!

Antique, Estate, Household, Business or Farm.

**Sherry will work hard to get you top dollar!**

# CASE III BATTERY SALE

**Bring In Your Used Tractor or Car**



**\$10**

**BATTERIES**

**and receive a IN-STORE CREDIT**

**Group 31 Irrigation Batteries**

**NOW \$42.00**

With Good Core Exchange.

Now thru May 16, 2015 or While Supplies Last

- Agricultural
- Auto
- Marine
- Commercial
- Lawn and Garden
- ATV

**POWER SOLD HERE!**

## Kayton International, Inc.

Web Site: [www.kaytonint.com](http://www.kaytonint.com)

2630 State Hwy. 14, Albion • 402-395-2181 • 800-248-2215

1211 W. 2nd, Crofton • 402-388-4375 • 800-798-4376

West Hwy. 275, Neligh • 402-887-4118 • 800-247-4718

FINANCING PROVIDED BY

**CNH Capital**

LENDING | LEASING | CREDIT CARDS | INSURANCE  
© 2013 CNH AMERICA, L.L.C. All rights reserved. Case III is registered trademark of CNH America, L.L.C.  
CNH Capital is a trademark of CNH America, L.L.C. [www.caseih.com](http://www.caseih.com)

